



M/T “DÜZGİT HARMONY”

IMO II CHEMICAL / OIL TANKER

Vessel Particulars

Classification	: BV – IMO II
Built	: 2009
Builder	: Düzgıt, Turkey
Flag	: Malta
Port of Registry	: Valletta
IMO Nr.	: 9445370
Service Speed (%85 MCR)	: 11.5 Knots
Economic Speed	: 11.0 Knots
Cons. (1) (%85 MCR)	: 8.50 t/day ifo180cst
Cons. (2)	: 7.50 t/day ifo180cst
Stern Line	: Yes
Deck Crane Capacity	: 13 m / SWL. 5,0 mton
Communication	: Sat, GSM, Fax, Tlx, e-mail
Main Engine	: 2 x ABC 6MDZC/1000 KW
Propulsion System	: 2 x SRP 1012 FP Schottel Rudderpropeller
Bow Thruster	: Schöttel 300 kW

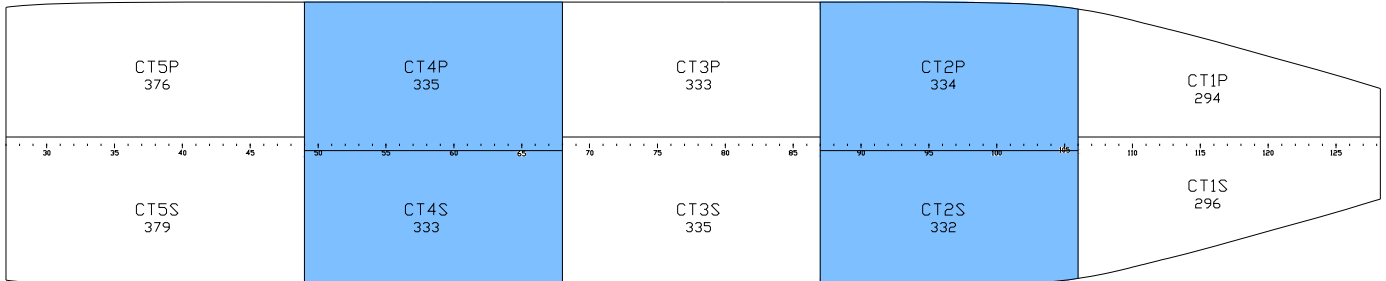
Main Dimensions

Summer Deadweight	: 3,146 mts
Winter Deadweight	: 3,040 mts
Summer Draught (SW)	: 5.13 m
Winter Draught (SW)	: 5.02 m
Length Overall	: 89.71 m
Moulded Breadth	: 12.50 m
Ballast Capacity	: 1,358 m ³
Cargo Capacity (98%) Exc. Slops	: 3347 m ³
Cargo Capacity (98%) Inc. Slops	: 3436 m ³
Gross Tonnage	: 2166
Net Tonnage	: 949
SBT Tonnage	: 377
Light Weight	: 1429 mts
Distance KTM	: 28.43 m
Parallel Body Length (SDWT)	: 57.60 m
Air draft (laden-mast folded)	: 15.00 m

M/T "DÜZGİT HARMONY"

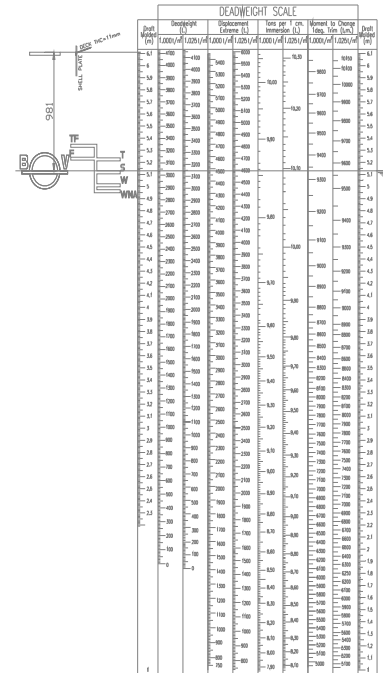
ALL VOLUMES ARE GIVEN IN M³ AT 98%

CSLP
51



CSLS
38 RESIDUE

Cargo Tanks						
Tank no	m3 98%	Lining	Pump Capacity	Max SG	IMO	Max Heat Capacity
CT1P	294	Marine Line	200 m ³ /h	1.35	2	80 deg C
CT1S	296	Marine Line	200 m ³ /h	1.35	2	80 deg C
CT2P	334	Marine Line	200 m ³ /h	1.35	2	80 deg C
CT2S	332	Marine Line	200 m ³ /h	1.35	2	80 deg C
CT3P	333	Marine Line	200 m ³ /h	1.35	2	80 deg C
CT3S	335	Marine Line	200 m ³ /h	1.35	2	80 deg C
CT4P	335	Marine Line	200 m ³ /h	1.35	2	80 deg C
CT4S	333	Marine Line	200 m ³ /h	1.35	2	80 deg C
CT5P	376	Marine Line	200 m ³ /h	1.35	2	80 deg C
CT5S	379	Marine Line	200 m ³ /h	1.35	2	80 deg C
CSLP	51	Marine Line	50 m ³ /h	1.35	2	80 deg C
CSLS	38	Marine Line	50 m ³ /h	1.35	2	80 deg C
Total	3436	Marine Line				
RESIDUE	13	Marine Line	10 m ³ /h	1.54	2	80 deg C



Manifold

Distance Bow-Center manifold	: 41.00 m
Distance Stern-Center manifold	: 48.60 m
Inboard from ships side	: 2.90 m
Height above deck	: 2.45 m
Height above waterline (loaded)	: 3.60 m
Height above waterline (in ballast)	: 5.25 m
Highest allowable pressure	: 16 bar
Manifold flanges	: 3"-6"-10" ANSI
Segregation for Cargo Lines	: 5 (CT) + 1 (SLP)

Nitrogen

Nitrogen plant producing 500 Nm³/h

Cargo Pumps

MarFlex electrically driven deepwell pumps in all cargo tanks. Pumping rate is each 200m³/h 110 mlc. Sp. Gravity: 1,0 Viscosity : 1,0 cst

Cargo Rating

Total discharging rate 800 m³/h
Total loading rate 1100 m³/h

Cargo Heating

316L Stainless steel heating coils (Single Loop)
Heating media is HOT-WATER (Fosfa)

Ballast System

Elec. driven centrifugal pumps
2 x 200m³/h = 400m³/h



DÜZGİT GROUP

DS HARMONY LTD.

Eski Büyükdere Caddesi, Park Plaza

No: 14, Kat-11, 34467-Maslak

Sarıyer - İstanbul / TURKEY

71, Old bakeryStreet, Valletta VLT 1455, MALTA c/o

Phone : +90 212 345-0530

Fax : +90 212 345-0539

e-mail : chartering@dsmship.com.tr

DATE	10.07.2009
REF.DWG.NO	CPT-12/R-07
B.V. APPROVED REF.NO	TPO/09/3082/AOD
B.V.NO	11463M
IMO NO	9445370

M/T DUZGIT HARMONY

DEADWEIGHT SCALE

